

Thailand Morning Cuppa

Top Story

Thai Union Group (TU TB, BUY, TP: THB17.50)

Modest Growth With Solid Margin; Keep BUY

Company Update

Stay BUY, new THB17.50 TP from THB16.00, 14% upside and c.4% yield. The reintroduction of lockdown restrictions should drive demand for Thai Union Group's ambient products to remain solid in the US and Europe along with a recovery of its frozen unit. Meanwhile, we retain our positive view on its margin that should remain in the upper range, supported by low inventory costs in previous quarters along with stringent cost control.

Analyst: Pakorn Khaeian +662 088 9627

Today's Report: [Thai Union Group: Modest Growth With Solid Margin; Keep BUY \(6 Nov 2020\)](#)

Previous Report: [Thai Union Group : Brighter Outlook In 2H20F; Maintain BUY \(14 Aug 2020\)](#)

Economic Research

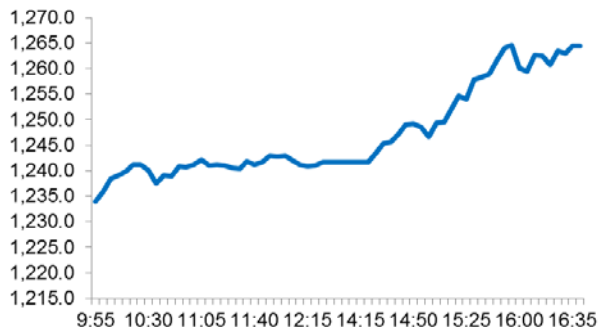
October Core Inflation Lower Than Consensus Estimate

Economics View

- Thailand's core inflation rate (which excludes raw food and fuel prices) in October was a disappointment as it slowed to 0.2%, from 0.3% in September. This reflected the weak domestic demand amidst the impact of COVID-19 on household income and consumer confidence.
- Headline inflation, meanwhile, remained in a contraction, at -0.5%, during the month – although this was an improvement from -0.7% in September, and outperformed the consensus estimate. This improvement came amidst a slower decline in oil prices, and a pick-up in food inflation.
- We maintain that Thailand's CPI will average at -1.0% YoY this year, as recovery will likely be patchy, due to the impact of the pandemic. Economist: Billy Toh | +603 9280 2184

Today's Report: [October Core Inflation Lower Than Consensus Estimate \(6 Nov 2020\)](#)

Previous Report: [September MPI Down, Beats Consensus Estimates \(28 Oct 2020\)](#)

Chart 1: SET intra-day graph


	Index	Chg	Chg (%)	YTD (%)
Thailand (SET)	1264.32	41.88	3.43%	-20.0%
Thailand (SET50)	799.58	34.49	4.51%	-25.2%
Thailand (SET100)	1796.18	71.53	4.15%	-23.3%
USA (Dow Jones)	28390.18	542.52	1.95%	-0.5%
USA (S&P500)	3510.45	67.01	1.95%	8.7%
USA (Nasdaq)	11890.93	300.15	2.59%	32.5%
UK (FTSE)	5906.18	22.92	0.39%	-21.7%
Singapore (FSSTI)	2588.62	72.64	2.89%	-19.7%
Hong Kong (Hang Seng)	25695.92	809.78	3.25%	-8.8%
Japan (Nikkei)	24105.28	302.88	1.27%	1.9%
Malaysia (KLCI)	1501.49	36.88	2.52%	-5.5%
China (SHANGHAI SE)	3320.13	42.69	1.30%	8.9%
Indonesia (JCI)	5260.33	155.13	3.04%	-16.5%

Foreign Exchange Rates / Oil Market

USD	Closed	Chg	Chg (%)
Baht (Onshore)	30.74	-0.03	0.09
Yen	103.53	0.04	-0.04
Euro	1.18	0.00	0.00
Oil Price (USD/barrel)			
Brent	39.90	-0.43	-1.07
Nymex-Crude Light	38.48	-0.31	-0.80

Note: *As at 5 Nov 2020 closing

Table 1: Key market indices (6 Nov 2020)

SET	2018	2019	2020F	2021F
PE (x)	16.25	18.02	23.15	16.00
P/BV (x)	1.74	1.71	1.43	1.38
Yield (%)	3.35	3.26	2.60	3.06

SET Value by investor Type: Daily	Sell (THBm)	Net (THBm)
Institution	12,018.02	5,858.78
Proprietary	11,617.96	10,797.50
Foreign	30,627.14	30,749.16
Retail	26,651.78	33,509.46

SET Value by investor Type	MTD (THBm)	YTD (THBm)
Institution	10,266.40	65,323.71
Proprietary	1,059.54	5,261.74
Foreign	-4,996.56	-304,546.78
Retail	-6,329.37	233,961.33

SET50 Index Future	Long	Short	Net	MTD	YTD
Institution	77,489	87,466	-9,977	-1,224	-12,834
Foreign	136,614	111,934	24,680	37,273	148,915
Local	204,363	219,066	-14,703	-36,049	-136,081

Foreign Fund Flows (USDm)	MTD	YTD	YoY
Thailand	-3.9	-161.0	-9583.7

Note: *As at 5 Nov 2020 closing

Top BUYs

	TP (THB)	Upside (%)	Catalysts
Advance Info Service (ADVANC TB)	220.00	22.91	<ul style="list-style-type: none"> Outlook should continue to recover with cost management on focus. While we expect the normalisation of prepaid segment demand, subs acquisition activities and easing competition to gradually drive topline to recovery in 2H20, we think a value-to-money strategy through a bundling package should continue to yield additional revenue to the group The toning down of capex guidance should ease investor concern over the imminent margins pressure. We expect the impact from the roll-out of 5G network to be limited, as it should be partially absorbed by network cost saving initiative, staggered payment profile, and tax incentive scheme
Bangkok Chain Hospital (BCH TB)	17.50	25.90	<ul style="list-style-type: none"> We still expect to see robust COVID-19 screening services demand throughout 2H20 on the continuous return of students studying abroad, migrant workers, and business travellers after border restrictions are relaxed. The doubling of its capacity under the alternative state quarantine should boost upside from this new revenue stream and bolster FY20 earnings We expect to see strong 2H20 recovery in SSO revenue, driven by the resumption of pent-up demand from high-cost care, trauma, and dental services. We also think global budget disbursements could bring further upsides this year, thanks to relatively lower insured patients traffic during COVID-19
CP ALL (CPALL TB)	77.00	30.51	<ul style="list-style-type: none"> In 2H20, we expect a gradual recovery of convenience stores sales in 2H20, as a V-shaped recovery, while Siam Makro's operations remain solid As it has the most extensive store network, CP ALL may strongly benefit the new normal in terms of facilitating delivery of products and services through its developing omni-channel platform Still the best-in-class retailer with intact new store opening plan. Expect full-year earnings returning to pre-pandemic levels in 2021
Global Power Synergy (GPSC TB)	72.00	20.00	<ul style="list-style-type: none"> We expect GPSC's earnings continue to grow steadily at least 2-3 years ahead, mainly on pipeline projects and efficiency improvements. Being power flagship of PTT Group, we believe GPSC would receive more long-term support from the group, e.g. Gas to Power 600 MW in Myanmar, electricity supply for New Yangon City. The current price doesn't reflect acquisition of GLOW and the current 20x P/E is trading below average P/E regional peers, making long-term investment risk/reward attractive.
Siam Cement (SCC TB)	420.00	20.00	<ul style="list-style-type: none"> There are three growth drivers, including an upcycle of petrochemical spreads, a series of new infrastructure projects to start the construction process, and growth expansion in the packaging business especially after SCG Packaging raises funds from its IPO Its earnings going forward should rely mainly on petrochemical unit's performance starting to improve in 2H20 and growing stronger on a full-year basis in FY21
Supalai (SPALI TB)	19.40	19.75	<ul style="list-style-type: none"> Earnings should improve significantly in 2H20, with four condominium projects starting to be transferred during this period. The revenue from these projects should enhance revenue growth and GPM in 2H20. Revenue upside could emerge if Supalai is able to transfer its mega-size Supalai Oriental Sukhumvit 39 condominium project, which is valued at THB10bn, within 4Q20. Consistent earnings growth in FY21F-22F is supported by orderbook of THB12-14bn per year to be recognised in the next two years. In addition, we expect the company to enjoy the advantages of being a well-known developer in the low-rise project segment.
Thai Union Group (TU TB)	17.50	12.90	<ul style="list-style-type: none"> While we expect demand of canned food products to normalise after global lockdowns are lifted, revenue from chilled and frozen seafood and related business segment is likely to recover in 2H20 largely due to HORECA businesses gradually resuming operations. Margin should remain firm, supported by favourable raw materials prices and growth from its pet care business that has relatively high margin.
TISCO Financial (TISCO TB)	81.70	10.78	<ul style="list-style-type: none"> We believe high pre-emptive provisions and robust CAR would lead TISCO to survive amidst uncertainties and get ready to pay outstanding full-year dividends TISCO's asset quality is resilient among peers. Loans under debt relief measures only stand at 24% of total loans in 3Q20, which is one of the lowest among Thai banks. Although management does prudent and cautious policy under uncertainties, they still proactive to find ways to improve NIM as best as they can.

Recent Stories

To access the following reports, please click on the link:

[RHB | Thailand Morning Cuppa : 5 November 2020](#)

[Dynasty Ceramic : The End Of a Rosy Road Ahead; Still SELL](#)

[RHB | Thailand Morning Cuppa : 4 November 2020](#)

[Home Product Center : Short-Term Outlook Unattractive; TAKE PROFIT](#)

[RHB | Thailand Morning Cuppa : 3 November 2020](#)

[RHB | Thailand Morning Cuppa : 2 November 2020](#)

[Supalai : More Fully Equipped With REIT Channel; Stay BUY](#)

[CP ALL : Towards Longer-Term Opportunities; Still BUY](#)

[RHB | Thailand Morning Cuppa : 30 October 2020](#)

[PTT Exploration & Production : Riding On Crude Price Recovery; Keep BUY](#)

[Siam Cement : Performance Set To Improve; Keep BUY](#)

[RHB | Thailand Morning Cuppa : 29 October 2020](#)

[Banks : The Worst Is Over But Risks Persist; NEUTRAL](#)

[RHB | Thailand Morning Cuppa : 28 October 2020](#)

[Home Product Center : Sluggish 3Q20 Results](#)

[Bangkok Bank : Solid Asset Quality Shining Through; Keep BUY](#)

[September MPI Down, Beats Consensus Estimates](#)

[RHB | Thailand Morning Cuppa : 27 October 2020](#)

[How a Biden Win Could Impact Thailand](#)

[RHB | Thailand Morning Cuppa : 26 October 2020](#)

[Kasikornbank : Visibility On Asset Quality Still Poor; NEUTRAL](#)

[Budget To Focus On Economic Recovery, Reform](#)

[RHB | Thailand Morning Cuppa : 22 October 2020](#)

[Market Strategy: Amidst The Storms](#)

[Siam Commercial Bank: Proactive Management Of Asset Quality; BUY](#)

[Total Access Communication: Concerns Overly Priced-In; U/G To TRADING BUY](#)

[RHB | Thailand Morning Cuppa : 21 October 2020](#)

[TMB Bank : A Quarter Of Asset Quality Management](#)

[RHB | Thailand Morning Cuppa : 20 October 2020](#)

[CH Karnchang: Major Turnaround On The Horizon; Stay BUY](#)

[Kiattakin Bank : Retail Financing Risks Persist; U/G To NEUTRAL](#)

[RHB | Thailand Morning Cuppa : 19 October 2020](#)

[TISCO Financial : Well-positioned To Weather COVID-19; U/G To BUY](#)

[RHB | Thailand Morning Cuppa : 16 October 2020](#)

[TISCO Financial : Earnings Rebound On Easing Of Lockdown](#)

[Industrial Estates : No Lustre In 3Q20F Earnings; Stay NEUTRAL](#)

[RHB | Thailand Morning Cuppa : 15 October 2020](#)

[RHB | Thailand Morning Cuppa : 14 October 2020](#)

[The Erawan Group : Still Heavily Dependent On Local Market; SELL](#)

[Telecommunications : 5G: Value Rather Than ARPU Adder \(For Now\)](#)

[Private Credit And Money Supply Slow In August](#)

[RHB | Thailand Morning Cuppa : 12 October 2020](#)

[RHB | Thailand Morning Cuppa : 9 October 2020](#)

[Global Power Synergy : A Good Level To Accumulate; Still BUY](#)

[LPN Development : Hindmost Among The Large Players; Keep SELL](#)

[RHB | Thailand Morning Cuppa : 8 October 2020](#)

RHB Guide to Investment Ratings

- Buy:** Share price may exceed 10% over the next 12 months
Trading Buy: Share price may exceed 15% over the next 3 months, however longer-term outlook remains uncertain
Neutral: Share price may fall within the range of +/- 10% over the next 12 months
Take Profit: Target price has been attained. Look to accumulate at lower levels
Sell: Share price may fall by more than 10% over the next 12 months
Not Rated: Stock is not within regular research coverage

Investment Research Disclaimers

RHB has issued this report for information purposes only. This report is intended for circulation amongst RHB and its affiliates' clients generally or such persons as may be deemed eligible by RHB to receive this report and does not have regard to the specific investment objectives, financial situation and the particular needs of any specific person who may receive this report. This report is not intended, and should not under any circumstances be construed as, an offer or a solicitation of an offer to buy or sell the securities referred to herein or any related financial instruments.

This report may further consist of, whether in whole or in part, summaries, research, compilations, extracts or analysis that has been prepared by RHB's strategic, joint venture and/or business partners. No representation or warranty (express or implied) is given as to the accuracy or completeness of such information and accordingly investors should make their own informed decisions before relying on the same.

This report is not directed to, or intended for distribution to or use by, any person or entity who is a citizen or resident of or located in any locality, state, country or other jurisdiction where such distribution, publication, availability or use would be contrary to the applicable laws or regulations. By accepting this report, the recipient hereof (i) represents and warrants that it is lawfully able to receive this document under the laws and regulations of the jurisdiction in which it is located or other applicable laws and (ii) acknowledges and agrees to be bound by the limitations contained herein. Any failure to comply with these limitations may constitute a violation of applicable laws.

All the information contained herein is based upon publicly available information and has been obtained from sources that RHB believes to be reliable and correct at the time of issue of this report. However, such sources have not been independently verified by RHB and/or its affiliates and this report does not purport to contain all information that a prospective investor may require. The opinions expressed herein are RHB's present opinions only and are subject to change without prior notice. RHB is not under any obligation to update or keep current the information and opinions expressed herein or to provide the recipient with access to any additional information. Consequently, RHB does not guarantee, represent or warrant, expressly or impliedly, as to the adequacy, accuracy, reliability, fairness or completeness of the information and opinion contained in this report. Neither RHB (including its officers, directors, associates, connected parties, and/or employees) nor does any of its agents accept any liability for any direct, indirect or consequential losses, loss of profits and/or damages that may arise from the use or reliance of this research report and/or further communications given in relation to this report. Any such responsibility or liability is hereby expressly disclaimed.

Whilst every effort is made to ensure that statement of facts made in this report are accurate, all estimates, projections, forecasts, expressions of opinion and other subjective judgments contained in this report are based on assumptions considered to be reasonable and must not be construed as a representation that the matters referred to therein will occur. Different assumptions by RHB or any other source may yield substantially different results and recommendations contained on one type of research product may differ from recommendations contained in other types of research. The performance of currencies may affect the value of, or income from, the securities or any other financial instruments referenced in this report. Holders of depositary receipts backed by the securities discussed in this report assume currency risk. Past performance is not a guide to future performance. Income from investments may fluctuate. The price or value of the investments to which this report relates, either directly or indirectly, may fall or rise against the interest of investors.

This report does not purport to be comprehensive or to contain all the information that a prospective investor may need in order to make an investment decision. The recipient of this report is making its own independent assessment and decisions regarding any securities or financial instruments referenced herein. Any investment discussed or recommended in this report may be unsuitable for an investor depending on the investor's specific investment objectives and financial position. The material in this report is general information intended for recipients who understand the risks of investing in financial instruments. This report does not take into account whether an investment or course of action and any associated risks are suitable for the recipient. Any recommendations contained in this report must therefore not be relied upon as investment advice based on the recipient's personal circumstances. Investors should make their own independent evaluation of the information contained herein, consider their own investment objective, financial situation and particular needs and seek their own financial, business, legal, tax and other advice regarding the appropriateness of investing in any securities or the investment strategies discussed or recommended in this report.

This report may contain forward-looking statements which are often but not always identified by the use of words such as "believe", "estimate", "intend" and "expect" and statements that an event or result "may", "will" or "might" occur or be achieved and other similar expressions. Such forward-looking statements are based on assumptions made and information currently available to RHB and are subject to known and unknown risks, uncertainties and other factors which may cause the actual results, performance or achievement to be materially different from any future results, performance or achievement, expressed or implied by such forward-looking statements. Caution should be taken with respect to such statements and recipients of this report should not place undue reliance on any such forward-looking statements. RHB expressly disclaims any obligation to update or revise any forward-looking statements, whether as a result of new information, future events or circumstances after the date of this publication or to reflect the occurrence of unanticipated event

The use of any website to access this report electronically is done at the recipient's own risk, and it is the recipient's sole responsibility to take precautions to ensure that it is free from viruses or other items of a destructive nature. This report may also provide the addresses of, or contain hyperlinks to, websites. RHB takes no responsibility for the content contained therein. Such addresses or hyperlinks (including addresses or hyperlinks to RHB own website material) are provided solely for the recipient's convenience. The information and the content of the linked site do not in any way form part of this report. Accessing such website or following such link through the report or RHB website shall be at the recipient's own risk.

This report may contain information obtained from third parties. Third party content providers do not guarantee the accuracy, completeness, timeliness or availability of any information and are not responsible for any errors or omissions (negligent or otherwise), regardless of the cause, or for the results obtained from the use of such content. Third party content providers give no express or implied warranties, including, but not limited to, any warranties of merchantability or fitness for a particular purpose or use. Third party content providers shall not be liable for any direct, indirect, incidental, exemplary, compensatory, punitive, special or consequential damages, costs, expenses, legal fees, or losses (including lost income or profits and opportunity costs) in connection with any use of their content.

The research analysts responsible for the production of this report hereby certifies that the views expressed herein accurately and exclusively reflect his or her personal views and opinions about any and all of the issuers or securities analysed in this report and were prepared independently and autonomously. The research analysts that authored this report are precluded by RHB in all circumstances from trading in the securities or other financial instruments referenced in the report, or from having an interest in the company(ies) that they cover.

The contents of this report is strictly confidential and may not be copied, reproduced, published, distributed, transmitted or passed, in whole or in part, to any other person without the prior express written consent of RHB and/or its affiliates. This report has been delivered to RHB and its affiliates' clients for information purposes only and upon the express understanding that such parties will use it only for the purposes set forth above. By electing to view or accepting a copy of this report, the recipients have agreed that they will not print, copy, videotape, record, hyperlink, download, or otherwise attempt to reproduce or re-transmit (in any form including hard copy or electronic distribution format) the contents of this report. RHB and/or its affiliates accepts no liability whatsoever for the actions of third parties in this respect.

The contents of this report are subject to copyright. Please refer to Restrictions on Distribution below for information regarding the distributors of this report. Recipients must not reproduce or disseminate any content or findings of this report without the express permission of RHB and the distributors.

The securities mentioned in this publication may not be eligible for sale in some states or countries or certain categories of investors. The recipient of this report should have regard to the laws of the recipient's place of domicile when contemplating transactions in the securities or other financial instruments referred to herein. The securities discussed in this report may not have been registered in such jurisdiction. Without prejudice to the foregoing, the recipient is to note that additional disclaimers, warnings or qualifications may apply based on geographical location of the person or entity receiving this report.

The term "RHB" shall denote, where appropriate, the relevant entity distributing or disseminating the report in the particular jurisdiction referenced below, or, in every other case, RHB Investment Bank Berhad and its affiliates, subsidiaries and related companies.

RESTRICTIONS ON DISTRIBUTION

Malaysia

This report is issued and distributed in Malaysia by RHB Investment Bank Bhd. The views and opinions in this report are our own as of the date hereof and is subject to change. If the Financial Services and Markets Act of the United Kingdom or the rules of the Financial Conduct Authority apply to a recipient, our obligations owed to such recipient therein are unaffected. RHB Investment Bank Bhd has no obligation to update its opinion or the information in this report.

Thailand

This report is issued and distributed in the Kingdom of Thailand by RHB Securities (Thailand) PCL, a licensed securities company that is authorised by the Ministry of Finance, regulated by the Securities and Exchange Commission of Thailand and is a member of the Stock Exchange of Thailand. The Thai Institute of Directors Association has disclosed the Corporate Governance Report of Thai Listed Companies made pursuant to the policy of the Securities and Exchange Commission of Thailand. RHB Securities (Thailand) PCL does not endorse, confirm nor certify the result of the Corporate Governance Report of Thai Listed Companies.

Indonesia

This report is issued and distributed in Indonesia by PT RHB Sekuritas Indonesia. This research does not constitute an offering document and it should not be construed as an offer of securities in Indonesia. Any securities offered or sold, directly or indirectly, in Indonesia or to any Indonesian citizen or corporation (wherever located) or to any Indonesian resident in a manner which constitutes a public offering under Indonesian laws and regulations must comply with the prevailing Indonesian laws and regulations.

Singapore

This report is issued and distributed in Singapore by RHB Bank Berhad (Singapore branch) which is a holder of a full bank licence and an exempt capital markets services licence and financial adviser regulated by the Monetary Authority of Singapore. RHB Bank Berhad (Singapore branch) may distribute reports produced by its respective foreign entities, affiliates or other foreign research houses pursuant to an arrangement under Regulation 32C of the Financial Advisers Regulations. Where the report is distributed in Singapore to a person who is not an Accredited Investor, Expert Investor or an Institutional Investor, RHB Bank Berhad (Singapore branch) accepts legal responsibility for the contents of the report to such persons only to the extent required by law. Singapore recipients should contact RHB Bank Berhad (Singapore branch) in respect of any matter arising from or in connection with the report.

United States

This report was prepared by RHB is meant for distribution solely and directly to “major” U.S. institutional investors as defined under, and pursuant to, the requirements of Rule 15a-6 under the U.S. Securities and Exchange Act of 1934, as amended (the “Exchange Act”) via a registered U.S. broker-dealer as appointed by RHB from time to time. Accordingly, any access to this report via Bursa Marketplace or any other Electronic Services Provider is not intended for any party other than “major” US institutional investors (via a registered U.S broker-dealer), nor shall be deemed as solicitation by RHB in any manner. RHB is not registered as a broker-dealer in the United States and currently has not appointed a U.S. broker-dealer. Additionally, RHB does not offer brokerage services to U.S. persons. Any order for the purchase or sale of all securities discussed herein must be placed with and through a registered U.S. broker-dealer as appointed by RHB from time to time as required by the Exchange Act Rule 15a-6. For avoidance of doubt, RHB reiterates that it has not appointed any U.S. broker-dealer during the issuance of this report. This report is confidential and not intended for distribution to, or use by, persons other than the recipient and its employees, agents and advisors, as applicable. Additionally, where research is distributed via Electronic Service Provider, the analysts whose names appear in this report are not registered or qualified as research analysts in the United States and are not associated persons of any registered U.S. broker-dealer as appointed by RHB from time to time and therefore may not be subject to any applicable restrictions under Financial Industry Regulatory Authority (“FINRA”) rules on communications with a subject company, public appearances and personal trading. Investing in any non-U.S. securities or related financial instruments discussed in this research report may present certain risks. The securities of non-U.S. issuers may not be registered with, or be subject to the regulations of, the U.S. Securities and Exchange Commission. Information on non-U.S. securities or related financial instruments may be limited. Foreign companies may not be subject to audit and reporting standards and regulatory requirements comparable to those in the United States. The financial instruments discussed in this report may not be suitable for all investors. Transactions in foreign markets may be subject to regulations that differ from or offer less protection than those in the United States.

Please refer to the following link ([RHB Research conflict disclosures – October 2020](#)) and the Disclosure of Conflict of Interest in each of the research reports provided in this email for more details.

Kuala Lumpur	Singapore
<p>RHB Investment Bank Bhd Level 3A, Tower One, RHB Centre Jalan Tun Razak Kuala Lumpur Malaysia Tel : +(60) 3 9280 8888 Fax : +(60) 3 9200 2216</p>	<p>RHB Bank Berhad (Singapore branch) 90 Cecil Street #04-00 RHB Bank Building Singapore 069531</p>
Jakarta	Bangkok
<p>PT RHB Sekuritas Indonesia Revenue Tower, 11th Floor, District 8 - SCBD Jl. Jendral Sudirman Kav 52-53 Jakarta 12190 Indonesia Tel : +6221 509 39 888 Fax : +6221 509 39 777</p>	<p>RHB Securities (Thailand) PCL 10th Floor, Sathorn Square Office Tower 98, North Sathorn Road, Silom Bangrak, Bangkok 10500 Thailand Tel : +(66) 2 088 9999 Fax : +(66) 2 088 9799</p>