

Technical Analyzer

Saravut Tachochavalit, Analyst

TEL : +66 (2) 088 9999 Ext. 9754
 EMAIL : Saravut.ta@rhbgroup.com

Intraday

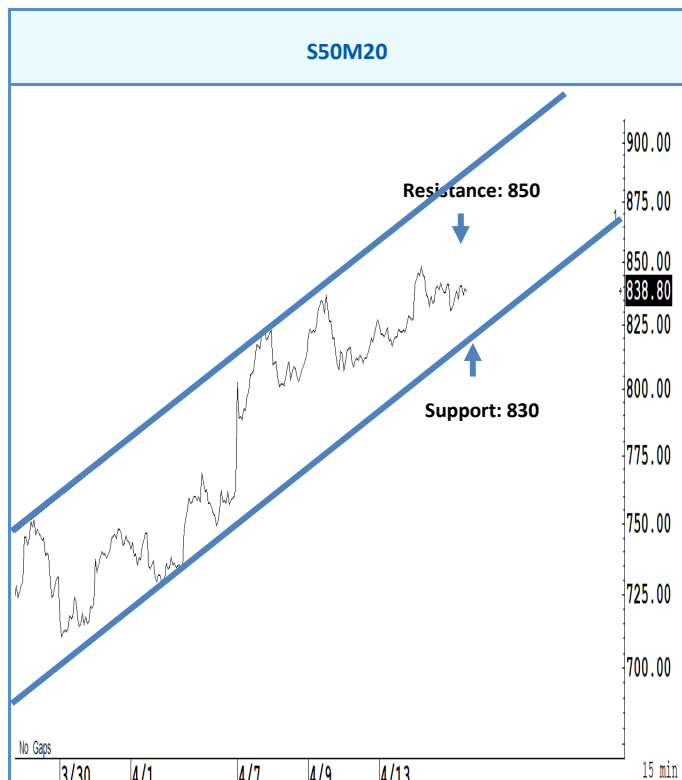
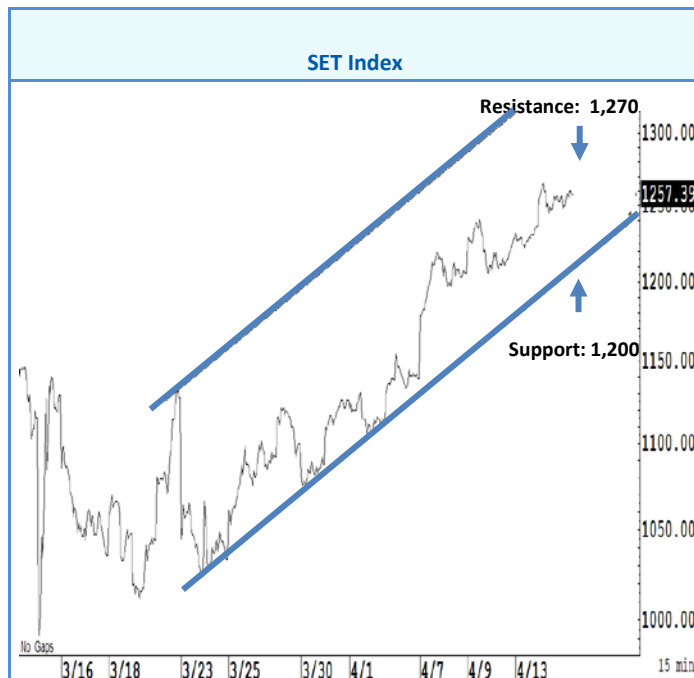
ประเด็นสำคัญ

ตลาดหุ้นในเอเชียเข้านี้มีทั้งบวกและลบ รอดูผลประกอบการบริษัทเอกชน และตัวเลขเศรษฐกิจสหรัฐฯ เช่น ยอดค้าปลีก ผลผลิตภาคอุตสาหกรรม และสต็อกน้ำมันดิบประจำสัปดาห์ของ EIA

ตลาดหุ้นไทยบ่ายนี้ คาดว่าจะผันผวนจากแรงขายทำกำไร ตัวเลขผู้ติดเชื้อโควิด-19 ยังทรงตัว เราคาดว่าจะต้องติดตามสถานการณ์ต่อไปจนถึงสิ้นเดือนนี้ ซึ่งภาครัฐกำลังประเมินสถานการณ์ และนายกจะเป็นผู้ตัดสินใจว่าจะเปิดกิจกรรมทางเศรษฐกิจบางส่วนหรือไม่ ติดตามผลประกอบการกลุ่มธนาคารพาณิชย์

การวิเคราะห์ทางเทคนิค

SET Index แกว่ง หลังขึ้นไปทำจุดสูงใหม่ในวานนี้ แนะนำ trading ในกรอบระหว่าง 1,237-1,257 จุด ปิดต่ำกว่า 1,230 จุด จะเริ่มปรับฐาน แนะนำขาย หุ้นที่แนะนำซื้อ SCC, BAM



การวิเคราะห์ทางเทคนิค

สั้น ๆ ไม่ต่ำกว่าแนวรับแถว ๆ 827 จุด มีลุ้นดีดกลับขึ้นไปแถว ๆ 850 จุด

กลยุทธ์การลงทุน

แนะนำ trading ในกรอบระหว่าง 827-850 จุด รับรู้กำไร

RHB Guide to Investment Ratings

Buy: Share price may exceed 10% over the next 12 months

Trading Buy: Share price may exceed 15% over the next 3 months, however longer-term outlook remains uncertain

Neutral: Share price may fall within the range of +/- 10% over the next 12 months

Take Profit: Target price has been attained. Look to accumulate at lower levels

Sell: Share price may fall by more than 10% over the next 12 months

Not Rated: Stock is not within regular research coverage

Disclosure & Disclaimer

RHB OSK Securities (Thailand) PCL (formerly known as OSK Securities (Thailand) PCL), a subsidiary of OSK Investment Bank Berhad, Malaysia, which have since merged into RHB Investment Bank Berhad, which in turn is a wholly-owned subsidiary of RHB Capital Berhad is the issuer or will be the issuer of derivative warrants that have underlying securities contained or mentioned in this research report. Should RHB OSK be the issuer of the derivative warrants, RHB OSK may act as the market maker for such derivative warrants. As a result, investors should be aware that RHB OSK may have a conflict of interest that could affect the objectivity of this research report.

All research is based on material compiled from data considered to be reliable at the time of writing, but RHB does not make any representation or warranty, express or implied, as to its accuracy, completeness or correctness. No part of this report is to be construed as an offer or solicitation of an offer to transact any securities or financial instruments whether referred to herein or otherwise. This report is general in nature and has been prepared for information purposes only. It is intended for circulation to the clients of RHB and its related companies. Any recommendation contained in this report does not have regard to the specific investment objectives, financial situation and the particular needs of any specific addressee. This report is for the information of addressees only and is not to be taken in substitution for the exercise of judgment by addressees, who should obtain separate legal or financial advice to independently evaluate the particular investments and strategies.

RHB, its affiliates and related companies, their respective directors, associates, connected parties and/or employees may own or have positions in securities of the company(ies) covered in this research report or any securities related thereto, and may from time to time add to, or dispose off, or may be materially interested in any such securities. Further, RHB, its affiliates and related companies do and seek to do business with the company(ies) covered in this research report and may from time to time act as market maker or have assumed an underwriting commitment in securities of such company(ies), may sell them or buy them from customers on a principal basis and may also perform or seek to perform significant investment banking, advisory or underwriting services for or relating to such company(ies), as well as solicit such investment, advisory or other services from any entity mentioned in this research report.

RHB and its employees and/or agents do not accept any liability, be it directly, indirectly or consequential losses, loss of profits or damages that may arise from any reliance based on this report or further communication given in relation to this report, including where such losses, loss of profits or damages are alleged to have arisen due to the contents of such report or communication being perceived as defamatory in nature.

The term "RHB" shall denote where applicable, the relevant entity distributing the report in the particular jurisdiction mentioned specifically herein below and shall refer to RHB Research Institute Sdn Bhd, its holding company, affiliates, subsidiaries and related companies.

All Rights Reserved. This report is for the use of intended recipients only and may not be reproduced, distributed or published for any purpose without prior consent of RHB and RHB accepts no liability whatsoever for the actions of third parties in this respect.

Malaysia

This report is published and distributed in Malaysia by RHB Research Institute Sdn Bhd (233327-M), Level 11, Tower One, RHB Centre, Jalan Tun Razak, 50400 Kuala Lumpur, a wholly-owned subsidiary of RHB Investment Bank Berhad (RHBIB), which in turn is a wholly-owned subsidiary of RHB Capital Berhad.

Singapore

This report is published and distributed in Singapore by DMG & Partners Research Pte Ltd (Reg. No. 200808705N), a wholly-owned subsidiary of DMG & Partners Securities Pte Ltd, a joint venture between Deutsche Asia Pacific Holdings Pte Ltd (a subsidiary of Deutsche Bank Group) and OSK Investment Bank Berhad, Malaysia which have since merged into RHB Investment Bank Berhad (the merged entity is referred to as "RHBIB", which in turn is a wholly-owned subsidiary of RHB Capital Berhad). DMG & Partners Securities Pte Ltd is a Member of the Singapore Exchange Securities Trading Limited. DMG & Partners Securities Pte Ltd may have received compensation from the company covered in this report for its corporate finance or its dealing activities; this report is therefore classified as a non-independent report.

As of 15 April 2020, DMG & Partners Securities Pte Ltd and its subsidiaries, including DMG & Partners Research Pte Ltd do not have proprietary positions in the securities covered in this report, except for:

a) -

As of 15 April 2020, none of the analysts who covered the securities in this report has an interest in such securities, except for:

a) -

Special Distribution by RHB

Where the research report is produced by an RHB entity (excluding DMG & Partners Research Pte Ltd) and distributed in Singapore, it is only distributed to "Institutional Investors", "Expert Investors" or "Accredited Investors" as defined in the Securities and Futures Act, CAP. 289 of Singapore. If you are not an "Institutional Investor", "Expert Investor" or "Accredited Investor", this research report is not intended for you and you should disregard this research report in its entirety. In respect of any matters arising from, or in connection with this research report, you are to contact our Singapore Office, DMG & Partners Securities Pte Ltd.

Hong Kong

This report is published and distributed in Hong Kong by RHB OSK Securities Hong Kong Limited (“RHBSHK”) (formerly known as OSK Securities Hong Kong Limited), a subsidiary of OSK Investment Bank Berhad, Malaysia which have since merged into RHB Investment Bank Berhad (the merged entity is referred to as “RHBIB”), which in turn is a wholly-owned subsidiary of RHB Capital Berhad.

RHBSHK, RHBIB and/or other affiliates may beneficially own a total of 1% or more of any class of common equity securities of the subject company. RHBSHK, RHBIB and/or other affiliates may, within the past 12 months, have received compensation and/or within the next 3 months seek to obtain compensation for investment banking services from the subject company.

Risk Disclosure Statements

The prices of securities fluctuate, sometimes dramatically. The price of a security may move up or down, and may become valueless. It is as likely that losses will be incurred rather than profit made as a result of buying and selling securities. Past performance is not a guide to future performance. RHBSHK does not maintain a predetermined schedule for publication of research and will not necessarily update this report.

Indonesia

This report is published and distributed in Indonesia by PT RHB OSK Securities Indonesia (formerly known as PT OSK Nusadana Securities Indonesia), a subsidiary of OSK Investment Bank Berhad, Malaysia, which have since merged into RHB Investment Bank Berhad, which in turn is a wholly-owned subsidiary of RHB Capital Berhad.

Thailand

This report is published and distributed in Thailand by RHB OSK Securities (Thailand) PCL (formerly known as OSK Securities (Thailand) PCL), a subsidiary of OSK Investment Bank Berhad, Malaysia, which have since merged into RHB Investment Bank Berhad, which in turn is a wholly-owned subsidiary of RHB Capital Berhad.

Other Jurisdictions

In any other jurisdictions, this report is intended to be distributed to qualified, accredited and professional investors, in compliance with the law and regulations of the jurisdictions.

Kuala Lumpur	Hong Kong	Singapore
<p>RHB Research Institute Sdn Bhd Level 3A, Tower One, RHB Centre Jalan Tun Razak Kuala Lumpur Malaysia Tel : +(60) 3 9280 8888 Fax : +(60) 3 9200 2216</p>	<p>RHB Securities Hong Kong Ltd. 12th Floor World-Wide House 19 Des Voeux Road Central, Hong Kong Tel : +(852) 2525 1118 Fax : +(852) 2810 0908</p>	<p>RHB Securities Singapore Pte Ltd 10 Collyer Quay #09-08 Ocean Financial Centre Singapore 049315 Tel : +(65) 6533 1818 Fax : +(65) 6532 6211</p>
Jakarta	Bangkok	
<p>PT RHB Sekuritas Indonesia Revenue Tower 11th Floor, District 8 - SCBD Jl. Jendral Sudirman Kav 52-53 Jakarta 12190 Indonesia Tel : +6221 509 39 888 Fax : +6221 509 39 777</p>	<p>RHB Securities (Thailand) PCL 10th Floor, Sathorn Square Office Tower 98, North Sathorn Road, Silom Bangrak, Bangkok 10500 Thailand Tel: +(66) 2 088 9999 Fax : +(66) 2 088 9799</p>	